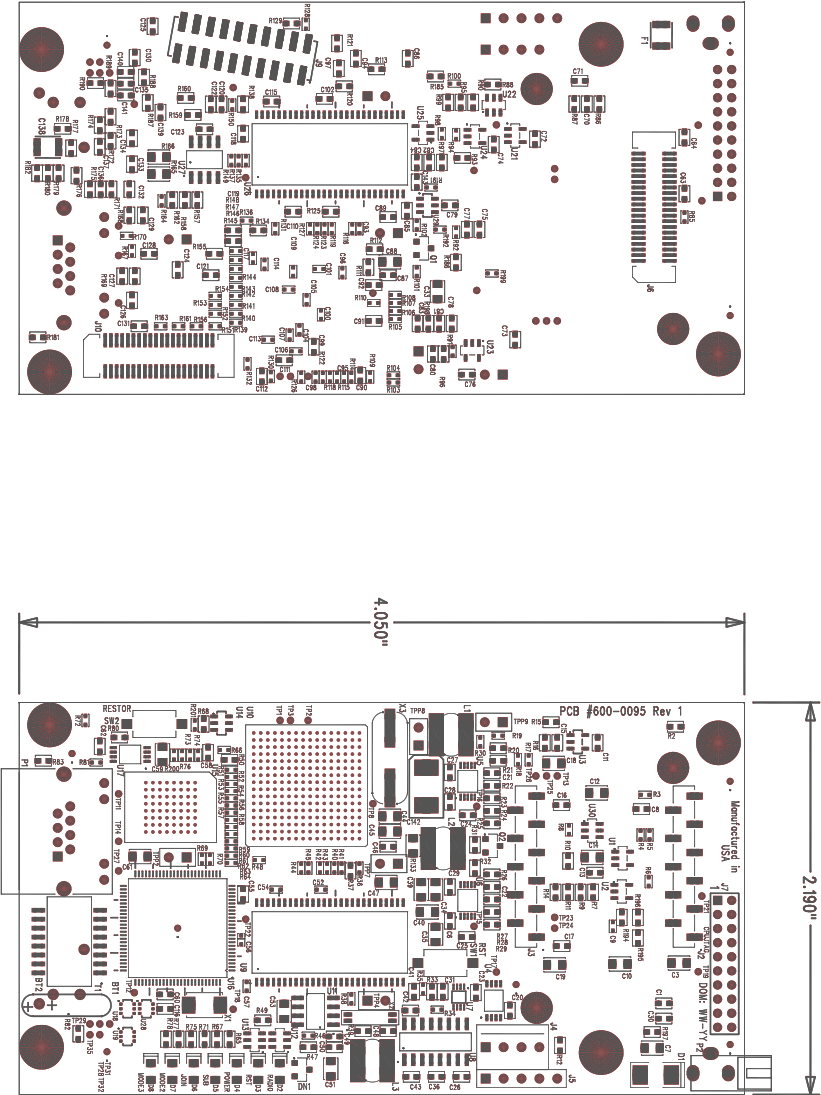


R E V I S I O N S				DATE	APPROVED
ECO	REV	DESCRIPTION	INITIAL	RELEASE	
000349	1				

- NOTES: (UNLESS OTHERWISE SPECIFIED)
- ASSEMBLE AND INSPECT IN ACCORDANCE WITH IPC STANDARD IPC-A-610-C.
 - SQUARE PAD DENOTES PIN ONE OF CONNECTORS AND HEADERS.
 - INSTALL LABELS IN ACCORDANCE WITH DUST DRAWING 895-0003 AND 895-0004.
 - MAXIMUM COMPONENT HEIGHT: .38 +/- .01.
 - DO NOT STUFF: B72, C26, 36, 43, 70, 86, 93-95, 98, 120, 137, 138, 141, F1, J4, 5, 9, L3, P1, 2, R7, 10, 11, 18, 35, 37, 39, 50, 86, 88, 90, 94, 95, 101, 106, 107, 116, 118, 122-125, 134, 148, 155, 168, 169, 177-182, 185, 186, 190, 194, 195, SW1, 2, T1, U1, U8, U22, U24.
 - PACKAGE AND PROTECT FROM DAMAGE AND DETERIORATION.



UNLESS OTHERWISE SPECIFIED, DIMENSIONS ARE IN INCHES:		APPROVALS	DATE	DUST NETWORKS	
TOLERANCES ARE:		DRAWN BY: scausuga		TITLE: PCA ASSY DWG, CONTROLLER MODULE, CEDAR	
FRACTIONS: .XX +/- .01		CHECKED			
ANGLES: 0 30° .XXX +/- .005		ENGINE			
MATERIAL: -		ISSUED			
FINISH: -					
NEXT ASSY USED ON					
APPLICATION		CONTRACT NO.			
DO NOT SCALE DRAWING					

SEE SEPARATE BOM, 700-0139

FSOM NO.	DWG NO.	705-0139	REV.
			1

SCALE: NONE

SHEET 1 OF 1